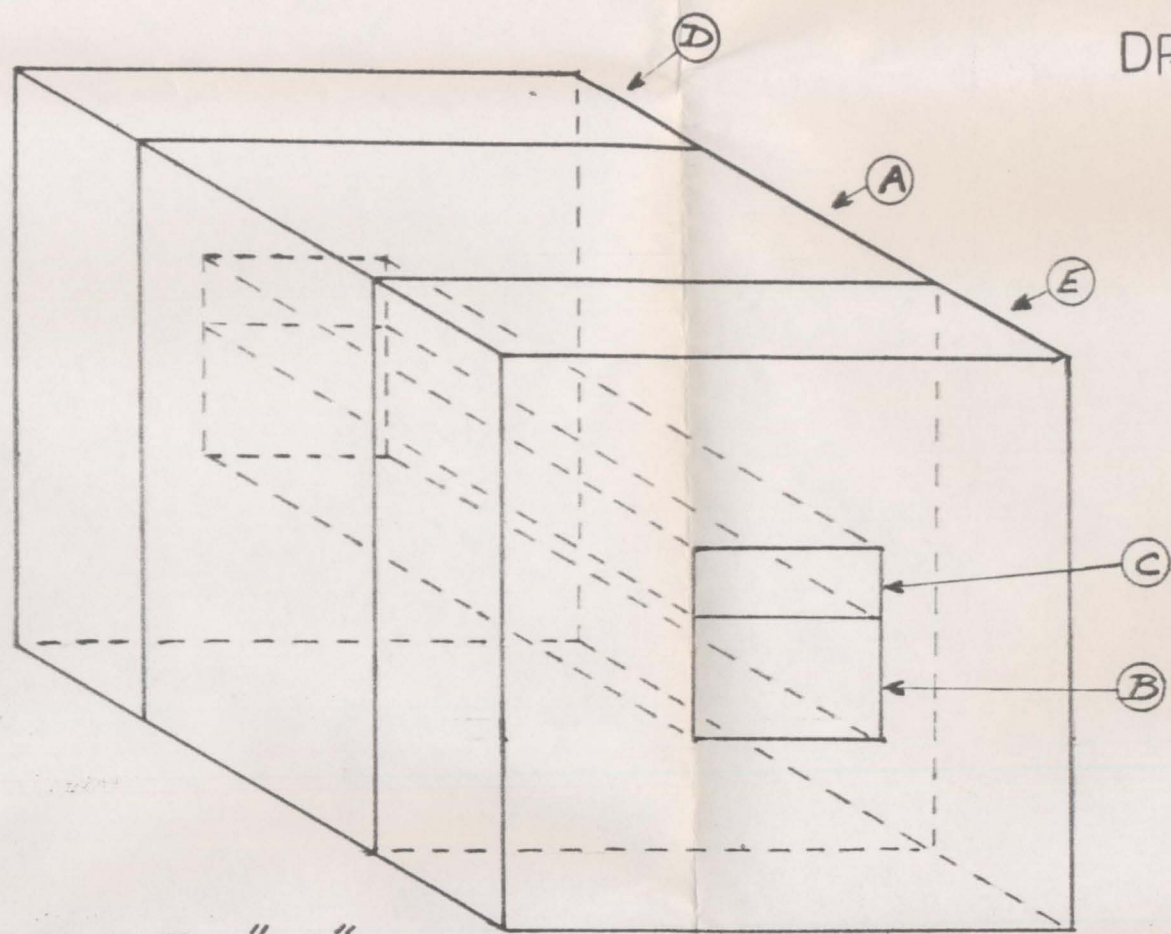


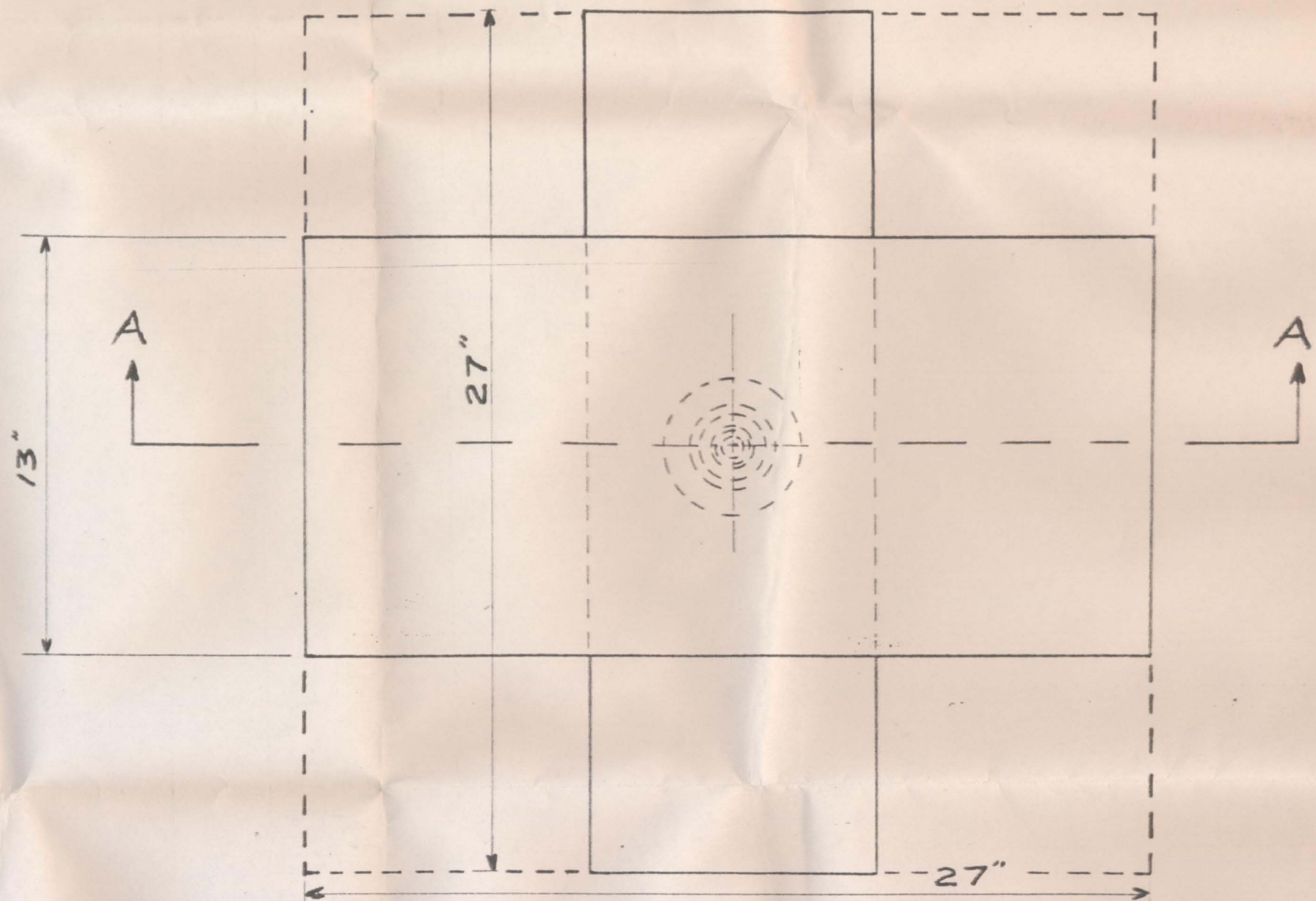
TO: DR. H. TRACY HALL  
 1711 NORTH LAMBERT LAKE  
 PROVO, UTAH 84601  
 FROM: WILLIAM A. HARSHAW, II  
 H-F ASSOCIATES, 6020 DEER RUN DRIVE  
 CHAGRIN FALLS, OHIO 44022

DRAWING NO. 2



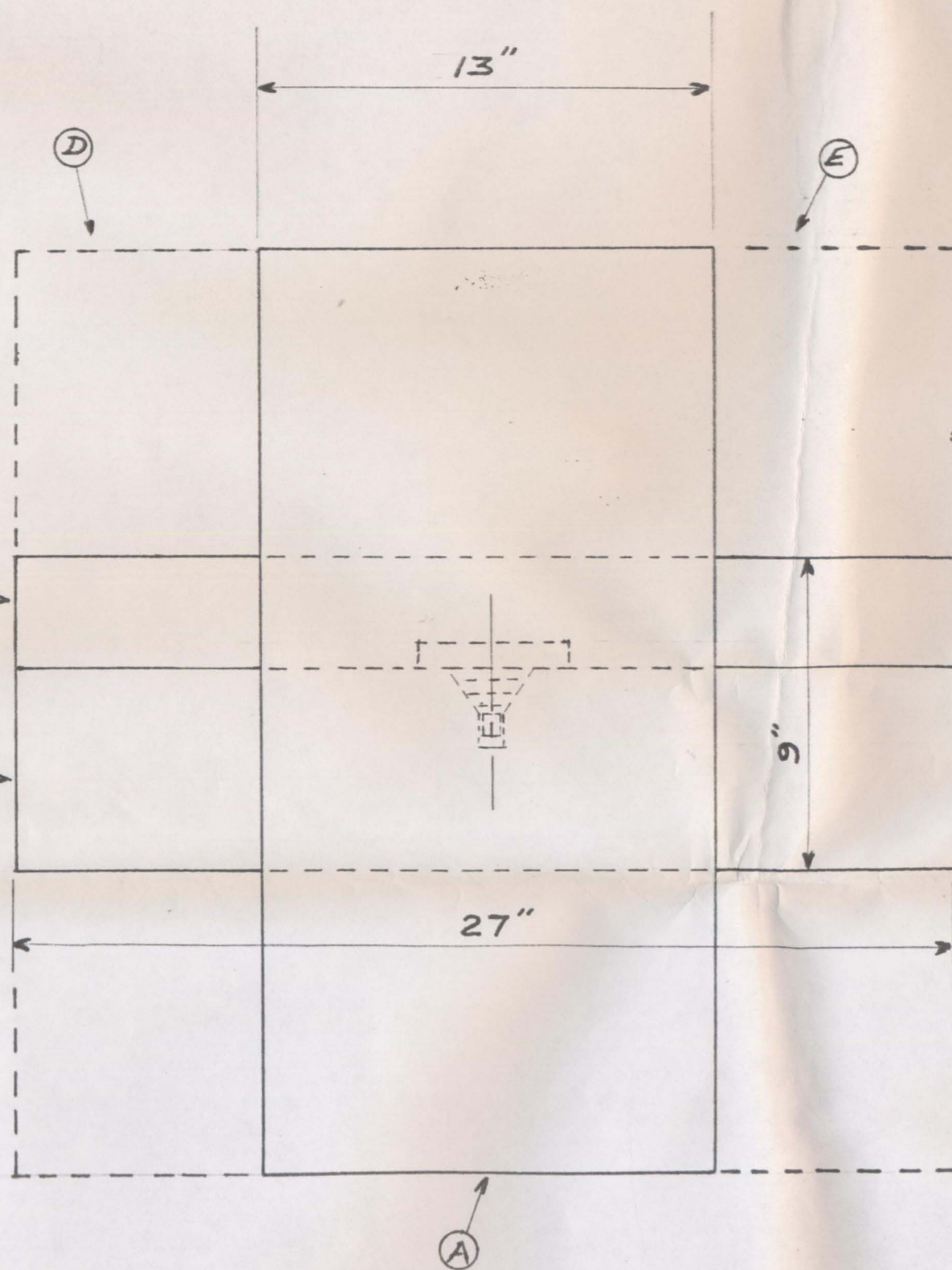
SCALE 1"=9"

REDUCED SCALE - ASSEMBLY

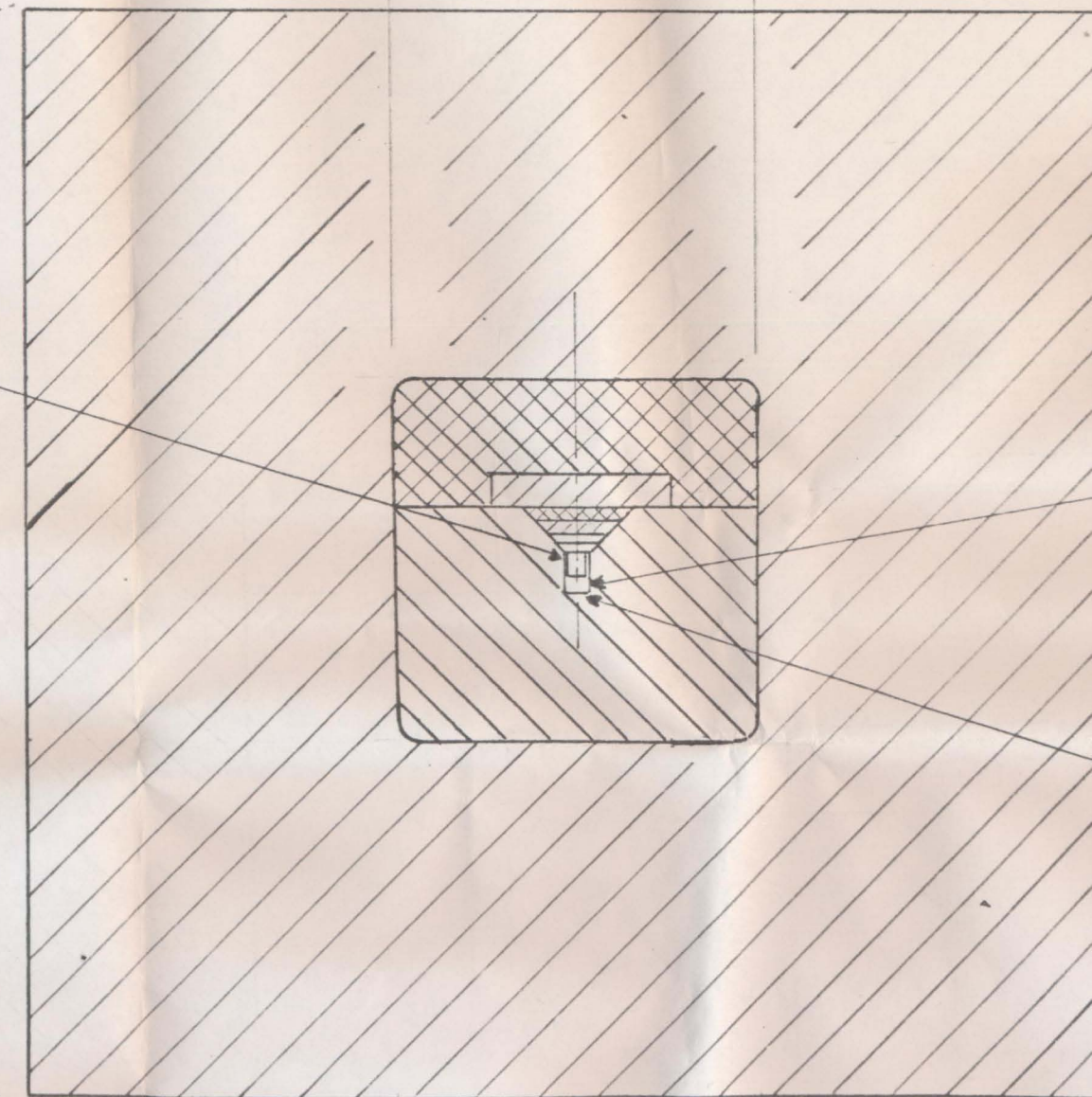


NOTES:

1. (D) AND (E) OPTIONAL.
2. AN ALTERNATE ARRANGEMENT HAS (B) AND (C) OF 13" LENGTH, (THE THICKNESS OF (A)) WITH A YOKE SURROUNDING (A) AND CONTACTING BOTH ENDS OF (B) AND (C).
3. ANOTHER OPTION, WITH (B) AND (C) OF 13" AND (A) ON ITS SIDE, IS TO USE RENTAL TIME ON INDUSTRIAL HYDRAULIC PRESS - AGAINST THE ENDS OF (B) AND (C).



HIGH-DENSITY ALUMINA  
 PLUNGER, LINED WITH  
 LITHIUM FLUORIDE



PROCESS CHAMBER,  
 NICKEL-LINED

ELECTRICAL  
 HEATER -  
 CONNECTIONS  
 NOT SHOWN

SECTION A-A

WSF  
 10-17-75

PRESSURE APPARATUS ASSEMBLY

SCALE 1"=4 1/2"